




PracticeDump



Microsoft MB5-705 Q&A - in .pdf	Microsoft MB5-705 Value Pack (Frequently Bought Together)	Microsoft MB5-705 Q&A - Testing Engine
	Exam Code: MB5-705	
Exam Code: MB5-705	Exam Name: Managing Microsoft Dynamics Implementations	Exam Code: MB5-705
Exam Name: Managing Microsoft Dynamics Implementations		Exam Name: Managing Microsoft Dynamics Implementations
PDF Version: V12.75	Online Testing Engine supports Windows / Mac / Android / iOS, etc., because it is the software based on WEB browser.	PC Software Version: V12.75
Updated: 07-11,2014	If you purchase Microsoft MB5-705 Value Pack, you will also own the free online Testing Engine.	Updated: 07-11,2014
Q & A: 76 Questions and Answers	Value Package Version: V12.75	Q & A: 76 Questions and Answers
Convenient, easy to study. Printable Microsoft MB5-705 PDF Format. It is an electronic file format regardless of the operating system platform. 100% Money Back Guarantee.	Updated: 07-11,2014	Uses the World Class MB5-705 Testing Engine. Free updates for one year. Real MB5-705 exam questions with answers. Install on multiple computers for self-paced, at-your-convenience training.
PDF Price: \$55.00	Q & A: 76 Questions and Answers	Testing Engine Price: \$55.00
Free Demo	MB5-705 PDF + PC Testing Engine + Online Testing Engine	Testing Engine
Add To Cart	Value Pack Total: \$460.00 \$69.80	Add To Cart
	Save 49%	
	Add To Cart	

<http://www.practicedump.com>

Free Practice Dumps - Unlimited Free Access of practice exam

Exam : **DES-6322**

Title : Specialist - Implementation
Engineer, VxRail Exam

Vendor : EMC

Version : DEMO

NO.1 An infrastructure system audit will begin in two weeks All data center devices will be checked to ensure they contain the installed patches and configurations. A system engineer will update the VxRail hosts with the latest patches and remediate security vulnerabilities.

What troubleshooting resource can a user receive from Dell and use proactively to help perform the remediation tasks?

- A. SolVe Online
- B. Log files
- C. KB articles
- D. Advisories

Answer: B

NO.2 Match each iDRAC Maintenance page tab to its description.

Tab	Description
Diagnostics	Displays server and user events
Lifecycle Log	Displays previously scheduled tasks, pending, and current events
Job Queue	Displays the last three boot captures
SupportAssist	Allows soft resets of iDRAC
Troubleshooting	Runs a detailed report on the server

Answer:

Tab	Description
Diagnostics	SupportAssist
Lifecycle Log	Job Queue
Job Queue	Diagnostics
SupportAssist	Troubleshooting
Troubleshooting	Lifecycle Log

NO.3 What is a valid 2-node VxRail cluster configuration?

- A. Series with 2x 25 GbE in a switch configuration
- B. Series with 4x 25 GbE in a direct-connect configuration
- C. Series with 4x 1 GbE in a direct-connect configuration

D. Series with 4x 10 GbE in a switch configuration

Answer: D

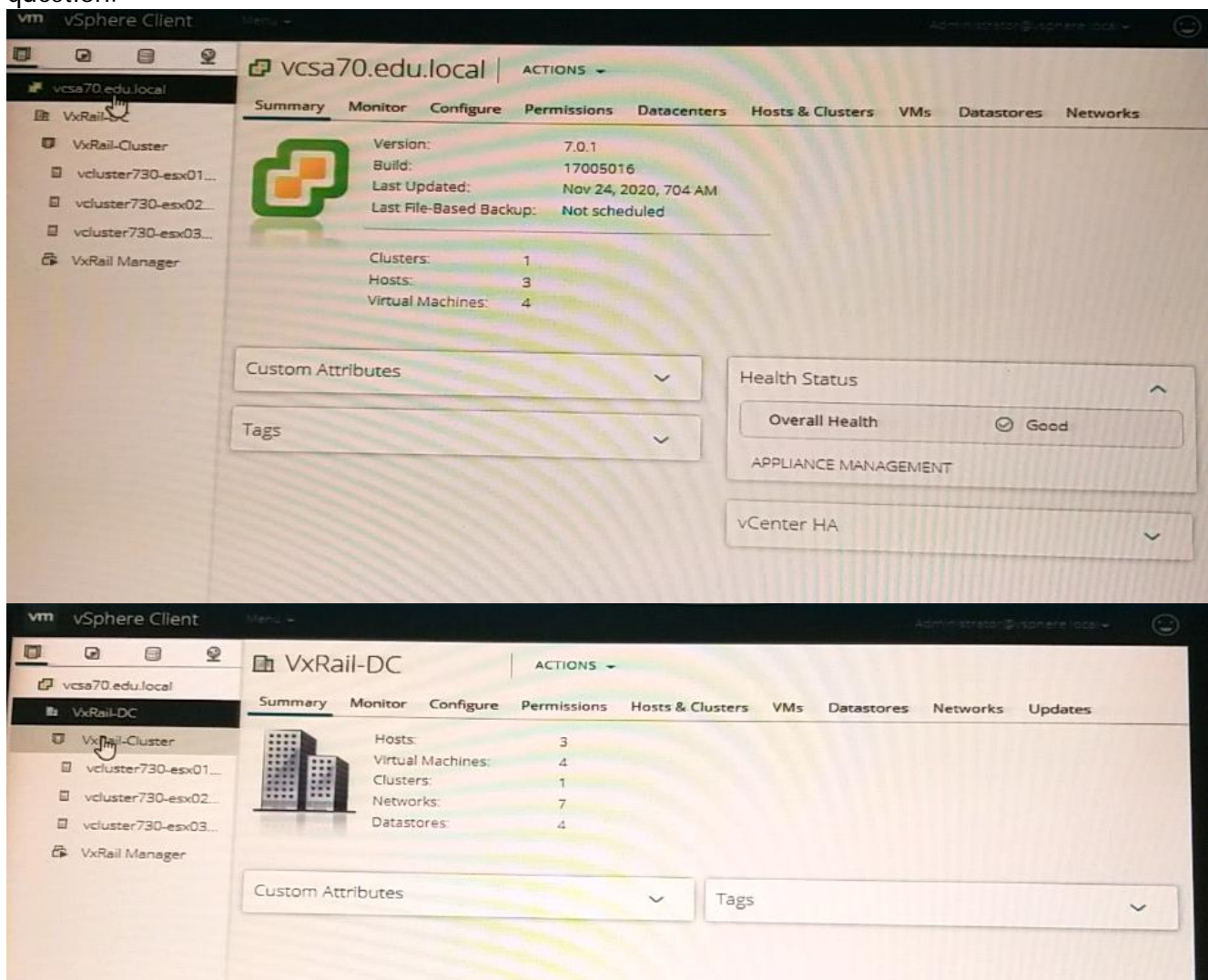
NO.4 What is a consideration when expanding a VxRail cluster? (Choose two.)

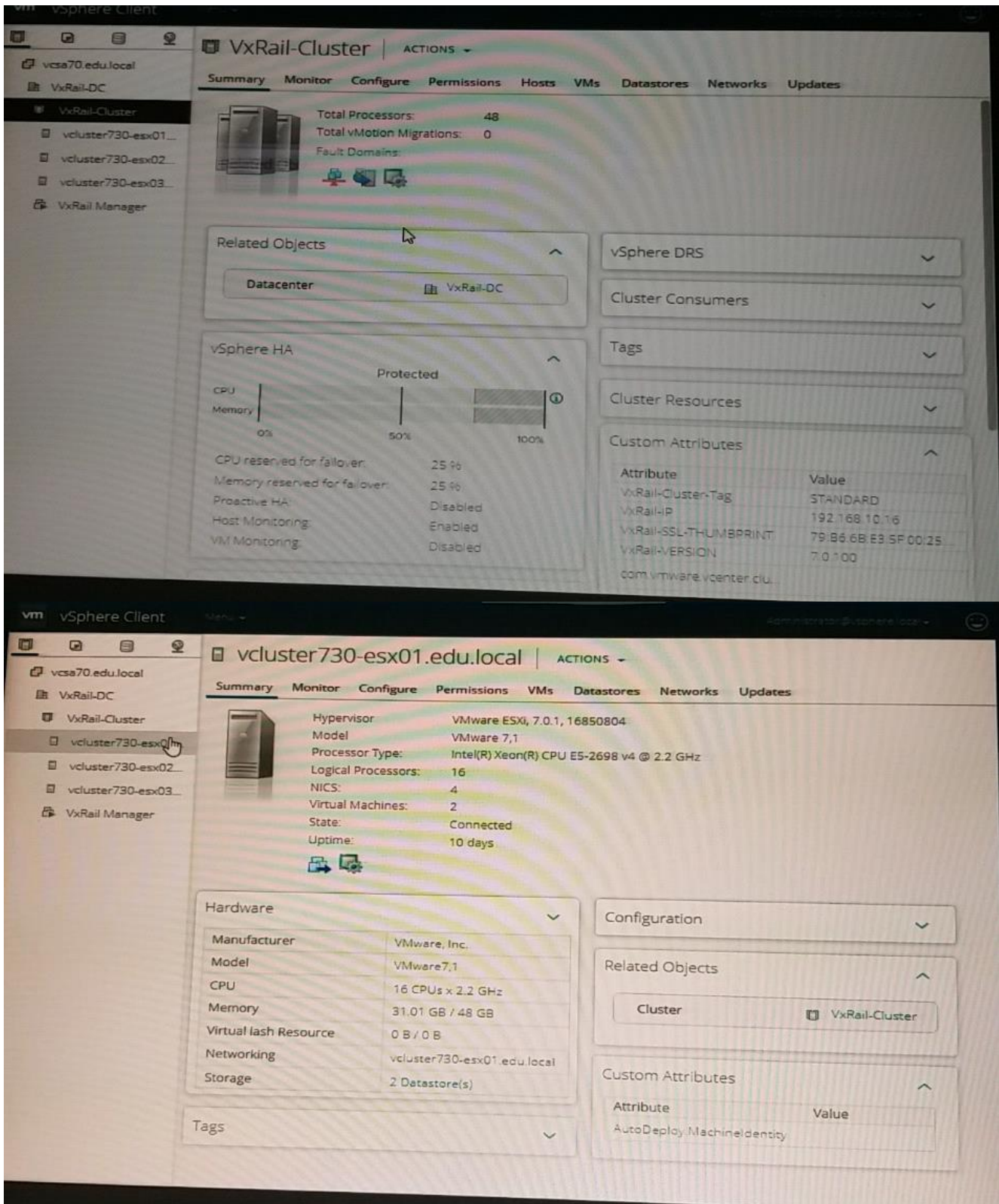
- A. 1 GbE must be hybrid and single processor node type
- B. Expanding a cluster to 64 nodes requires a 25 GbE network
- C. Mixing of All-Flash and all-NVMe nodes in a cluster is not allowed
- D. G Series clusters can be expanded only with G Series nodes

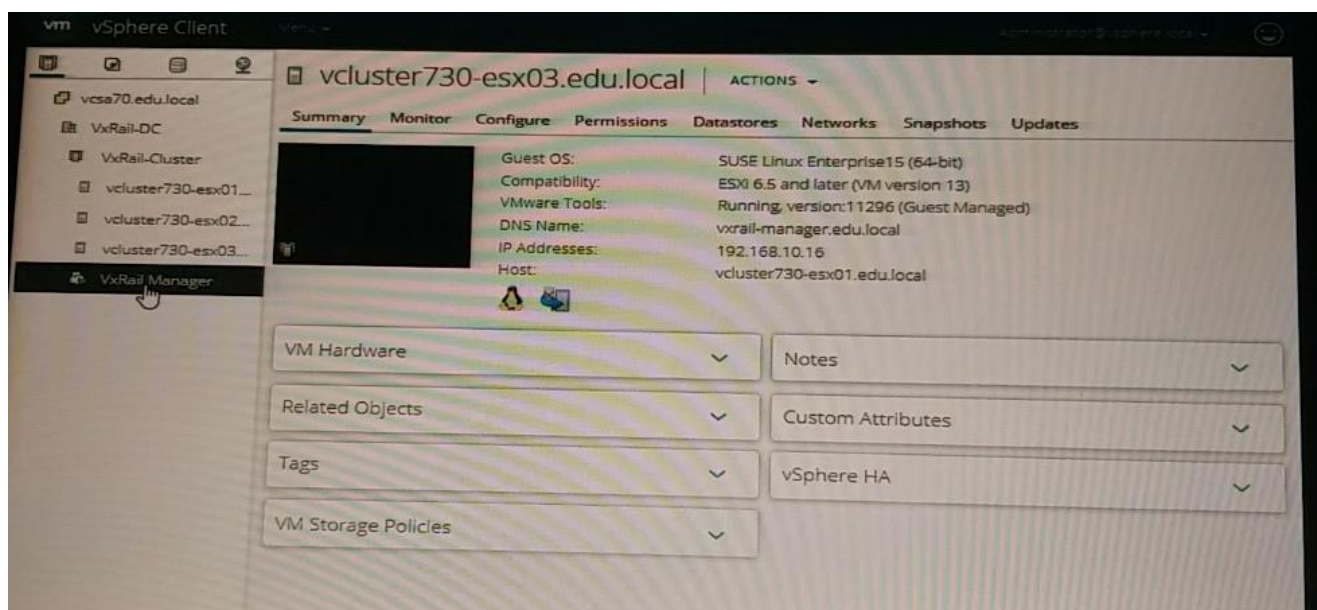
Answer: B,D

NO.5 Use the VxRail simulator to explore the system. What is the presented configuration?

Note: It is necessary to close (x) the simulator window before you can select a response to this question.







- A. Internal vCenter and Internal DNS
- B. External vCenter and external DNS
- C. Internal vCenter and external DNS
- D. External vCenter and internal DNS

Answer: C

NO.6 Which vSAN rules are configured for the VXRAIL-SYSTEM-STORAGE-PROFILE?

- A. Failures to tolerate - 1 failure RAID-5 (Erasure Coding) Object space reservation - Thick provisioning
- B. Failures to tolerate - 1 failure RAID-1 (Mirroring) Object space reservation - Thick provisioning
- C. Failures to tolerate - 2 failures RAID-1 (Mirroring) Object space reservation - Thin provisioning
- D. Failures to tolerate - 1 failure RAID-1 (Mirroring) Object space reservation - Thin provisioning

Answer: C

NO.7 A systems engineer needs to check the health of the nodes and the system VMs to prevent complications or failures during VxRail upgrades. Which tool must be used to perform the task?

- A. SolVe Online
- B. VxRail ACE
- C. VxVerify
- D. CloudIQ

Answer: C

Explanation:

VxVerify

VxVerify is a tool for checking the health of the nodes and the system VMs. It is designed to detect issues which could cause complications or failures during VxRail LCM upgrades. **VxVerify** unpacks a Python program called 'minion' which is sent to each ESXi host that runs through a series of checks. The tool is available for download from [PS Central](#). This tool is regularly updated, hence the lifespan of the encoded file is only two weeks. Acquire the latest version of the tool before using it. Follow the [KB 21527](#) article for instructions on how to run **VxVerify**.

NO.8 A VxRail implementation engineer is validating the network environment with NVT. The proposed switch configuration is shown in the exhibit. The ToR Switch information file is available. Use the VxRail simulator to set up NVT for switch validation. Import the switch Information and tag the ports based on the exhibit.

VLAN ID Information	
Untagged VLAN	External Management
External Management *	1751
Internal Management *	3939
vMotion *	10
VSAN *	20
Guest VM Networks *	1761

Switch Information	
MTU	
MTU *	1500

Answer:

Send your suggestions for this question.

NO.9 Which command is used to restart the Loudmouth process on an ESXi node?

- A. /usr/libAmiware/loudmouth/bin/loudmouthd restart
- B. /etc/int.d/loudmouth restart
- C. systemcti restart vmware-loudmouth
- D. systemcti restart loudmouth

Answer: B

NO.10 What is a consideration when adding nodes to a VxRail G Series chassis?

- A.** G560 and G410 nodes are permitted in the same chassis
- B.** In a full G Series chassis, all nodes must have 10GbE ports
- C.** All nodes in a G Series chassis must be identical
- D.** Hybrid and All-Flash nodes are permitted, if in different chassis

Answer: C